

INSTALLATION INSTRUCTION

Notice

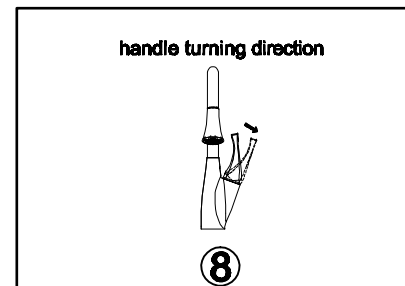
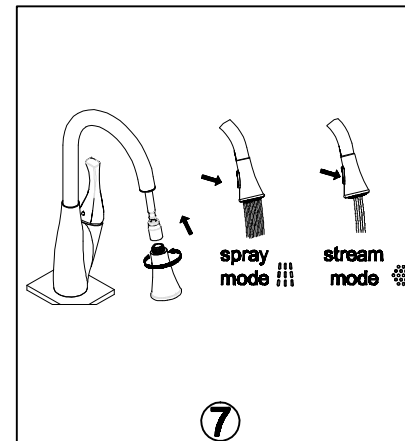
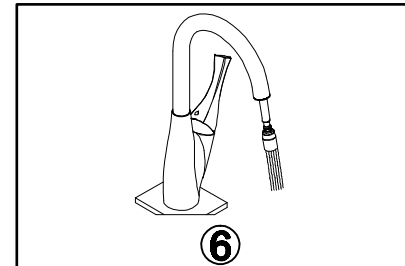
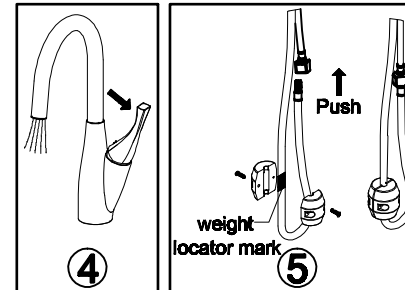
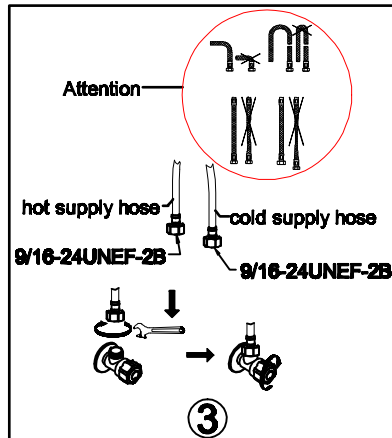
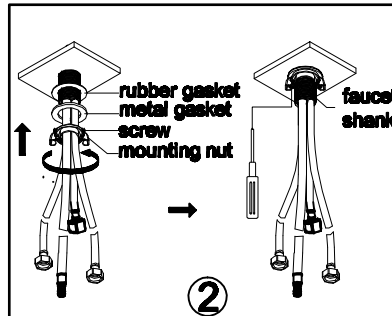
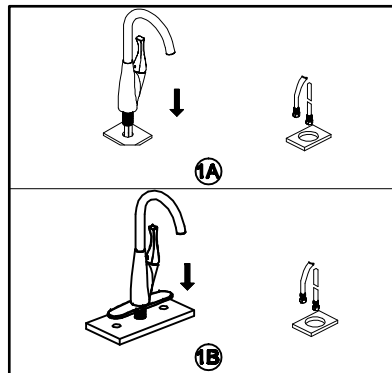
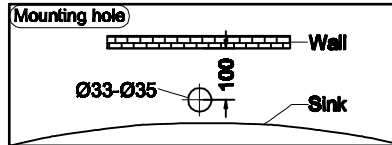
- Cleaning**
Before installation, shut off the water supply valves and clean up the water supply system.
- Mounting hole**
Make sure the mounting hole size is between $\varnothing 33\text{mm}-\varnothing 35\text{mm}$ as shown in the diagram
- Protection**
Clean the area of the mounting holes before installation.
To preserve the delicate finish of the faucet, please Do not scratch, but use a soft cloth to wipe around it.
Do not tighten the faucet too hard, so as to avoid deformation or fracture.

Parameter

- Water pressure**
Min: 0.05MPa Max: 0.75MPa
- Temperature of water supply** $\leq 85^\circ\text{C}$
- Working Temperature** $\geq 0^\circ\text{C}$

Installation Steps

- Take the faucet out of the packing box, and
 - For 1-hole installation, fit the single mounting ring over the hoses in mounting shank, aligning the grooves in the ring with the arches on the faucet base. Then fit the faucet to the hole on the sink. Or just fit the faucet to the mounting hole if no mounting ring provided, as shown in diagram 1A.
 - For 3-hole installation, install the black rubber ring properly into the deck plate and fit the deck plate over the hoses in the mounting shank, aligning the grooves in the deck plate with the arches on the faucet base, as shown in diagram 1B.
- Slide the rubber gasket, then the metal gasket, followed by the mounting nut up and over the hoses onto the faucet shank, and hand tighten them firmly. Fix the 2 screws for further security, as shown in diagram 2.
1. Connect the water supply lines onto the matching water valves and secure them properly, as shown in diagram 3.
3.2 Turn on the hot and cold water valves then the faucet.
Run the water flow for 15 seconds to clean up the lines and check for any leaks. Then the installation of non-pull kitchen faucet is completed. Hang the plastic aerator wrench on one of the hoses for future use. As shown in diagram 4.



4.1 Connect the spray hose to the "quick-lock" connection just by a simple push. Attach the weight to the spray hose at the marked position, as shown in diagram 5.

4.2 Turn on the water valves then the faucet.
Run the water flow for 15 seconds to clean up the lines and check for any leaks. Then the installation of spray hose is completed, as shown in diagram 6.

5. Turn off the faucet. Attach and secure the spray head to the spray hose. Pull out or pull down the spray head and get it return for a few times to check the pull-out hose is functioning properly. Then the installation of pull-down (or pull-out) kitchen faucet is completed, as shown in diagram 7.

6. Test with the water running, and make certain of the faucet sprayer changes between stream and spray properly, as shown in diagram 7.

7. After the installation completed, turn on the faucet and run the water flow, check for any leaks.

Maintenance

- Operate the faucet gently in order for a sustainable use.
- Always blot dry any water from faucet surface. Clean it with a damp non-abrasive cloth and wipe dry with a clean soft towel should be helpful to maintain good finish of the faucet.
To remove water spots, apply warm water and a damp soft cloth. Make certain to rinse thoroughly with water immediately after cleaner.
- Although the finish is extremely durable, it can be damaged by some cleaners. Do not use detergent powder, polishing powder, granular detergent or nylon brush to clean.
- Do not use acidic detergents. If happened, it must be rinsed properly and wiped dry with a soft towel.
- When the air temperature is below 0°C , heating solution in the house is a must.
- Shut off the water supply valves when the faucet will not be in use for an extended amount of time.
- We reserve the right to make revisions in the design of faucets without notice.